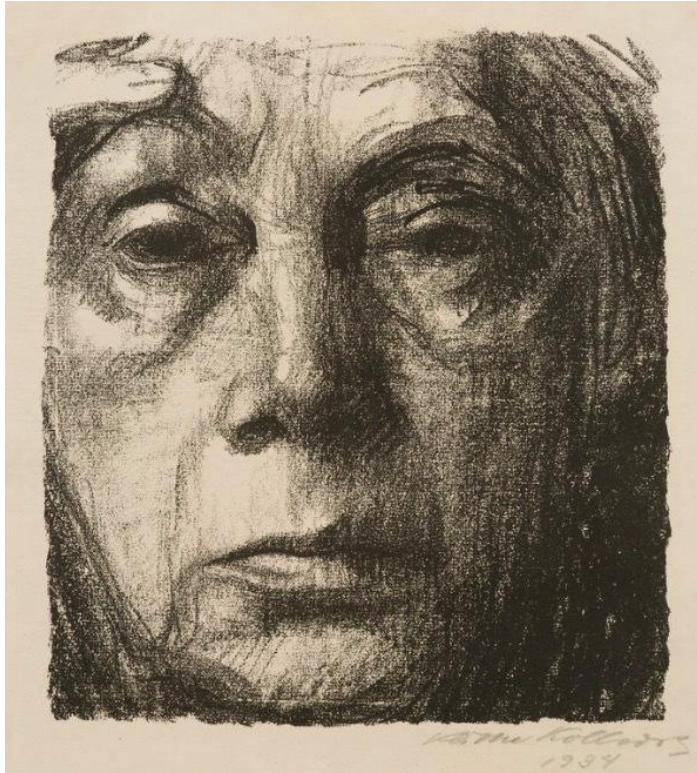


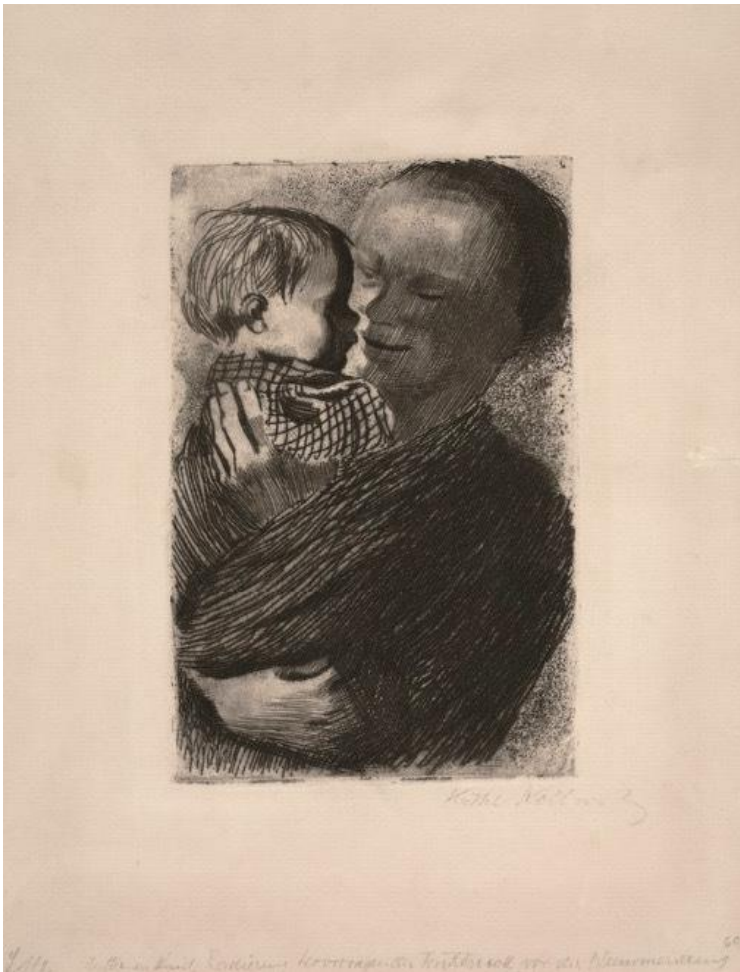


**Käthe Kollwitz** was a Russian artist who focused on creating portraits of working class women, as well as making a lot of self-portraits.



*Self Portrait, 1934*

Through her compositions, and her use of materials and tones, Käthe Kollwitz was able to show the struggles and pains that her subjects were living through. At the time Käthe Kollwitz was working, most famous or well-known artwork was made by men. Because of this, and since Kollwitz depicted females so prominently in her portrait work, she was somewhat of a pioneer for female artists. Kollwitz is known as one of Germany's most important artists from the early 1900's. As well as drawings, she used a range of different media such as painting, sculpture and printing (including woodcuts and lithography).



**Mother with Child in Her Arms, 1910**

Above is an example of an etching by Käthe Kollwitz. It shows a mother smiling fondly at her child. The artist still uses harsh lines and marks,



but this time they seem to depict movement, almost as though they are swirling around the child. Look at how the artist creates tones through mark-making instead of shading:



This style of drawing can be called naturalistic – the figures in the portraits do not look unrealistic, neither do they look hyperreal.

Käthe Kollwitz seemed to choose compositions that could strike an emotional response from the viewer – mothers with their children, families in unfortunate situations and women working hard. Her use of harsh dark and light colours add a dramatic impact to her portraits, exaggerating the emotions she was capturing. Kollwitz made artwork after World War I, and after losing her own son in the war, she often tried to explore the experience of mourning and loss.

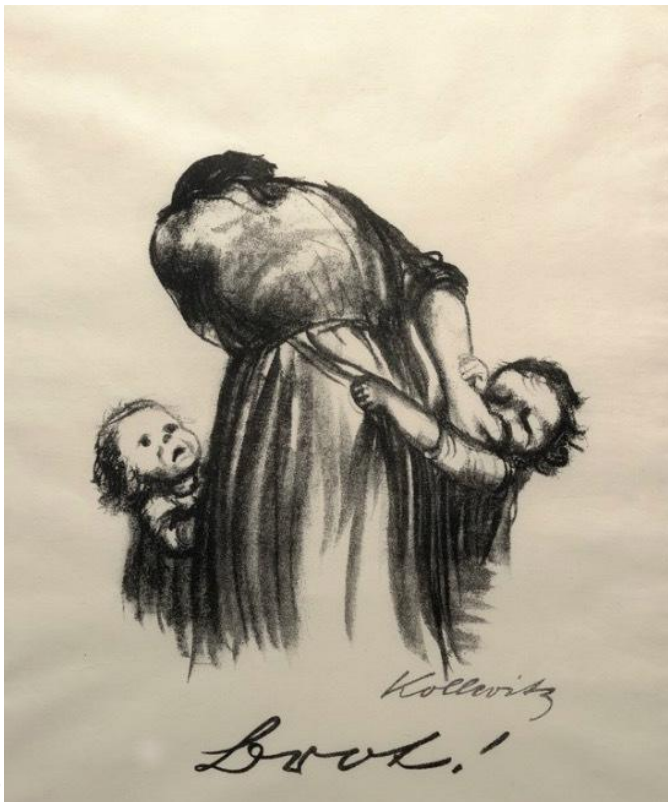


***Killed in Action 'Gefallen'***  
***Grieving Family, 1920-1929***





*Woman with Dead Child,*



1903

*Bread from War, 1924*

Kollwitz wanted to show the harsh realities of war through her portraiture and other artwork; her works have a very detailed quality which mostly depict grief, sorry and pain.



**What do you think of Käthe Kollwitz's artwork? Why?**

**How would you describe the mood, atmosphere and emotions you can see in the images?**

**Look closely at a portrait by Käthe Kollwitz - what do you think the artist was trying to show with her use of marks and colours?**

**Would you describe this as a happy image? Why or why not?**